

frein avant d'effectuer le  
 Bei kräftigen Würfeln k  
 dies kann zu schweren  
 keine Schnur nachruts  
 Es posible que el frer  
 el tapón de freno ant

**Handle convers**  
**Changement de l**

※As delivered from the factor  
 with the left hand.

※Le moulinet est livré d'origi

1. Turn the handle to the right!
2. Turn the handle cap to the

1. Pour retirer la manivelle, la fa
2. Pour retirer le capuchon de

1. Entfernen Sie die Kurbel, in
2. Entfernen Sie die Abdeck K

1. Gire la manija con la mar
2. Gire la tapa de la manija

3. Remove the water packing
4. Remove the "O" ring along

3. Retirer le joint d'étanchéité
4. Retirer la bague « O » en mêm

3. Entfernen Sie die der Ku
4. Entfernen Sie auch den "O"

3. Retire la junta de esta
4. Retire la tapa del pozo )

5. Re-attach the water pac
- where the handle will be

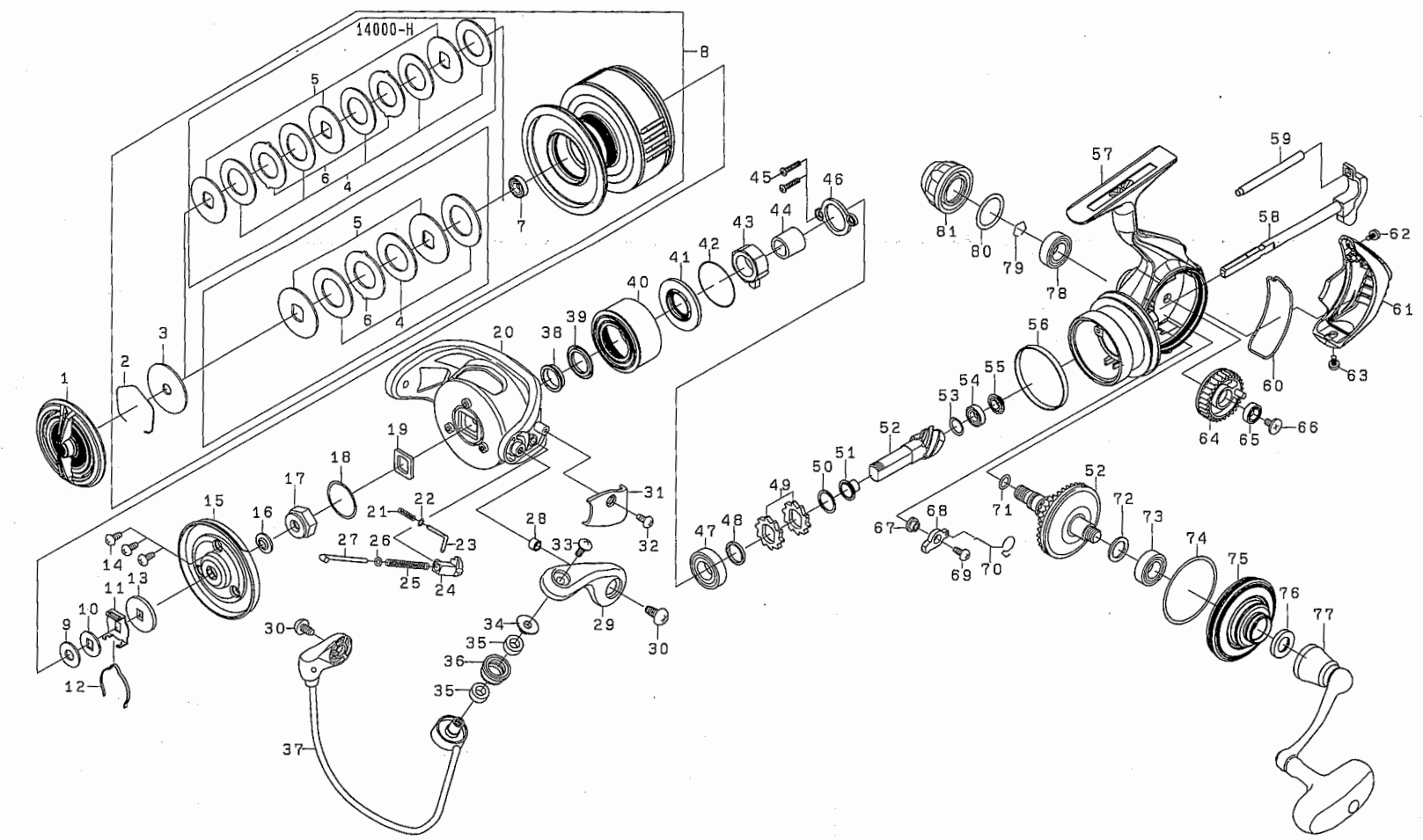
5. Remette le joint d'étanch
5. Befestigen Sie wieder di

5. Reponga la junta de e
- montada la maneta.

6. Switch the handle and the
7. Turn the handle to the rig

6. Pour intervertir la manivelle
7. Faire tourner la manivelle ve

6. Befestigen Sie die Kurbel i
7. Drehen Sie die Kurbel zun



BG MQ8000-H/10000-H/14000-H

| No. | Parts No. | Parts Name                       | No. | Parts No. | Parts Name            | No. | Parts No. | Parts Name               | No. | Parts No. | Parts Name           |
|-----|-----------|----------------------------------|-----|-----------|-----------------------|-----|-----------|--------------------------|-----|-----------|----------------------|
| 1   | 6M130901  | Drag Knob                        | 17  | 6J996301  | Rotor Nut             | 40  | 6J993201  | Body Nut                 | 61  | 6J993101  | Rear Cover           |
| 2   | 6F884001  | Drag Washer Retainer(8000,10000) | 18  | 6H501001  | O-ring (A)            | 41  | 6J961401  | Collar (F)               | 62  | 6M056601  | Screw (F)            |
| 3   | 61704101  | Drag Washer Retainer(14000)      | 19  | 6G322202  | Plate                 | 42  | 6J961501  | O-ring (B)               | 63  | 6M056602  | Screw (G)            |
| 4   | 6H380901  | Washer (A)(8000,10000)           | 20  | 6J321604  | Rotor                 | 43  | 6J309101  | Roller Clutch            | 64  | 6J320401  | Oscillating Gear     |
| 5   | 6J979901  | Washer (A)(14000)                | 21  | 6H503401  | Bail Spring (A)       | 44  | 6J309002  | Spacing Sleeve           | 65  | 6G467105  | Ball Bearing (D)     |
| 6   | 6J313601  | Drag Washer(8000,10000)          | 22  | 6G685401  | Washer (E)            | 45  | 6J001602  | Screw (E)                | 66  | 6H272202  | Screw (H)            |
| 7   | 6J577203  | Drag Washer(14000)               | 23  | 6H503301  | Bail Spring Shaft (A) | 46  | 6J308401  | Bearing Retainer (A)     | 67  | 6H243301  | Collar (I)           |
| 8   | 6H175101  | Key Washer(8000,10000)           | 24  | 6J322001  | Bail Spring Holder    | 47  | 6G426301  | Ball Bearing (B)         | 68  | 6M093801  | Anti-Reverse Pawl    |
| 9   | 6M126601  | Key Washer(14000)                | 25  | 6J321901  | Bail Spring (B)       | 48  | 6G613404  | Washer (G)               | 69  | 63516401  | Screw (I)            |
| 10  | 6G700701  | Eared Washer(8000,10000)         | 26  | 6J321801  | Washer (F)            | 49  | 6E262701  | Ratchet                  | 70  | 6J308601  | Spring               |
| 11  | 6M126701  | Eared Washer(14000)              | 27  | 6J321701  | Bail Spring Shaft (B) | 50  | 6G613404  | Washer (H)               | 71  | 6J321201  | O-ring (C)           |
| 12  | 6B358607  | Ball Bearing (A)                 | 28  | 6H945501  | Collar (B)            | 51  | 6M057102  | Collar (G)               | 72  | 63712800  | Washer (J)           |
| 13  | 6M067601  | Spool Assembly(8000)             | 29  | 6J309703  | Bail Arm              | 52  | 6Z025984  | Pinion Gear + Drive Gear | 73  | 6G522802  | Ball Bearing (E)     |
| 14  | 6J993301  | Spool Assembly(10000)            | 30  | 6G455601  | Screw (B)             | 53  | 6G578501  | Washer (I)               | 74  | 6H94101   | O-ring (D)           |
| 15  | 6M120601  | Spool Assembly(14000)            | 31  | 6J322103  | Cover                 | 54  | 6G522706  | Ball Bearing (C)         | 75  | 6J992901  | Side Cover           |
| 16  | 6F050100  | Washer (B)                       | 32  | 6G270801  | Screw (C)             | 55  | 6J320901  | Collar (H)               | 76  | 6J432001  | Packing (C)          |
| 17  | 6F050002  | Washer (C)                       | 33  | 6F608901  | Screw (D)             | 56  | 6H629701  | Brake Ring               | 77  | 6M064001  | Handle Assembly      |
| 18  | 6H309501  | Click Leaf Spring Holder         | 34  | 6J310401  | Collar (C)            | 57  | 6M068901  | Body(8000)               | 78  | 6G522802  | Ball Bearing (F)     |
| 19  | 6B747701  | Spool Click Leaf Spring          | 35  | 6J416001  | Collar (D)            | 58  | 6M069901  | Body(10000)              | 79  | 6H047201  | Bearing Retainer (B) |
| 20  | 6F049901  | Washer (D)                       | 36  | 6H246103  | Line Roller           | 59  | 6M120501  | Body(14000)              | 80  | 6J042501  | O-ring (E)           |
| 21  | 6G270801  | Screw (A)                        | 37  | 6J323301  | Bail Assembly         | 60  | 6J992701  | Main Shaft               | 81  | 6J394903  | Handle Screw Cap     |
| 22  | 6J992601  | Collar (A)                       | 38  | 6J996101  | Collar (E)            |     |           |                          |     |           |                      |
| 23  | 6J996101  | Collar (A)                       | 39  | 6G162301  | Packing (A)           |     |           |                          |     |           |                      |
| 24  | 6J996101  | Collar (A)                       |     |           |                       |     |           |                          |     |           |                      |
| 25  | 6J996101  | Collar (A)                       |     |           |                       |     |           |                          |     |           |                      |
| 26  | 6J996101  | Collar (A)                       |     |           |                       |     |           |                          |     |           |                      |
| 27  | 6J996101  | Collar (A)                       |     |           |                       |     |           |                          |     |           |                      |
| 28  | 6J996101  | Collar (A)                       |     |           |                       |     |           |                          |     |           |                      |
| 29  | 6J996101  | Collar (A)                       |     |           |                       |     |           |                          |     |           |                      |
| 30  | 6J996101  | Collar (A)                       |     |           |                       |     |           |                          |     |           |                      |
| 31  | 6J996101  | Collar (A)                       |     |           |                       |     |           |                          |     |           |                      |
| 32  | 6J996101  | Collar (A)                       |     |           |                       |     |           |                          |     |           |                      |
| 33  | 6J996101  | Collar (A)                       |     |           |                       |     |           |                          |     |           |                      |
| 34  | 6J996101  | Collar (A)                       |     |           |                       |     |           |                          |     |           |                      |
| 35  | 6J996101  | Collar (A)                       |     |           |                       |     |           |                          |     |           |                      |
| 36  | 6J996101  | Collar (A)                       |     |           |                       |     |           |                          |     |           |                      |
| 37  | 6J996101  | Collar (A)                       |     |           |                       |     |           |                          |     |           |                      |
| 38  | 6J996101  | Collar (A)                       |     |           |                       |     |           |                          |     |           |                      |
| 39  | 6G162301  | Packing (A)                      |     |           |                       |     |           |                          |     |           |                      |
| 40  | 6J993201  | Body Nut                         |     |           |                       |     |           |                          |     |           |                      |
| 41  | 6J961401  | Collar (F)                       |     |           |                       |     |           |                          |     |           |                      |
| 42  | 6J961501  | O-ring (B)                       |     |           |                       |     |           |                          |     |           |                      |
| 43  | 6J309101  | Roller Clutch                    |     |           |                       |     |           |                          |     |           |                      |
| 44  | 6J309002  | Spacing Sleeve                   |     |           |                       |     |           |                          |     |           |                      |
| 45  | 6J001602  | Screw (E)                        |     |           |                       |     |           |                          |     |           |                      |
| 46  | 6J308401  | Bearing Retainer (A)             |     |           |                       |     |           |                          |     |           |                      |
| 47  | 6G426301  | Ball Bearing (B)                 |     |           |                       |     |           |                          |     |           |                      |
| 48  | 6G613404  | Washer (G)                       |     |           |                       |     |           |                          |     |           |                      |
| 49  | 6E262701  | Ratchet                          |     |           |                       |     |           |                          |     |           |                      |
| 50  | 6G613404  | Washer (H)                       |     |           |                       |     |           |                          |     |           |                      |
| 51  | 6M057102  | Collar (G)                       |     |           |                       |     |           |                          |     |           |                      |
| 52  | 6Z025984  | Pinion Gear + Drive Gear         |     |           |                       |     |           |                          |     |           |                      |
| 53  | 6G578501  | Washer (I)                       |     |           |                       |     |           |                          |     |           |                      |
| 54  | 6G522706  | Ball Bearing (C)                 |     |           |                       |     |           |                          |     |           |                      |
| 55  | 6J320901  | Collar (H)                       |     |           |                       |     |           |                          |     |           |                      |
| 56  | 6H629701  | Brake Ring                       |     |           |                       |     |           |                          |     |           |                      |
| 57  | 6M068901  | Body(8000)                       |     |           |                       |     |           |                          |     |           |                      |
| 58  | 6M069901  | Body(10000)                      |     |           |                       |     |           |                          |     |           |                      |
| 59  | 6M120501  | Body(14000)                      |     |           |                       |     |           |                          |     |           |                      |
| 60  | 6J992701  | Main Shaft                       |     |           |                       |     |           |                          |     |           |                      |
| 61  | 6J320801  | Stabilizer Bar                   |     |           |                       |     |           |                          |     |           |                      |
| 62  | 6J993001  | Packing (B)                      |     |           |                       |     |           |                          |     |           |                      |
| 63  | 6M056601  | Screw (F)                        |     |           |                       |     |           |                          |     |           |                      |
| 64  | 6J320401  | Oscillating Gear                 |     |           |                       |     |           |                          |     |           |                      |
| 65  | 6G467105  | Ball Bearing (D)                 |     |           |                       |     |           |                          |     |           |                      |
| 66  | 6H272202  | Screw (H)                        |     |           |                       |     |           |                          |     |           |                      |
| 67  | 6H243301  | Collar (I)                       |     |           |                       |     |           |                          |     |           |                      |
| 68  | 6M093801  | Anti-Reverse Pawl                |     |           |                       |     |           |                          |     |           |                      |
| 69  | 63516401  | Screw (I)                        |     |           |                       |     |           |                          |     |           |                      |
| 70  | 6J308601  | Spring                           |     |           |                       |     |           |                          |     |           |                      |
| 71  | 6J321201  | O-ring (C)                       |     |           |                       |     |           |                          |     |           |                      |
| 72  | 63712800  | Washer (J)                       |     |           |                       |     |           |                          |     |           |                      |
| 73  | 6G522802  | Ball Bearing (E)                 |     |           |                       |     |           |                          |     |           |                      |
| 74  | 6H94101   | O-ring (D)                       |     |           |                       |     |           |                          |     |           |                      |
| 75  | 6J992901  | Side Cover                       |     |           |                       |     |           |                          |     |           |                      |
| 76  | 6J432001  | Packing (C)                      |     |           |                       |     |           |                          |     |           |                      |
| 77  | 6M064001  | Handle Assembly                  |     |           |                       |     |           |                          |     |           |                      |
| 78  | 6G522802  | Ball Bearing (F)                 |     |           |                       |     |           |                          |     |           |                      |
| 79  | 6H047201  | Bearing Retainer (B)             |     |           |                       |     |           |                          |     |           |                      |
| 80  | 6J042501  | O-ring (E)                       |     |           |                       |     |           |                          |     |           |                      |
| 81  | 6J394903  | Handle Screw Cap                 |     |           |                       |     |           |                          |     |           |                      |

\* Por favor, déjelo a un le