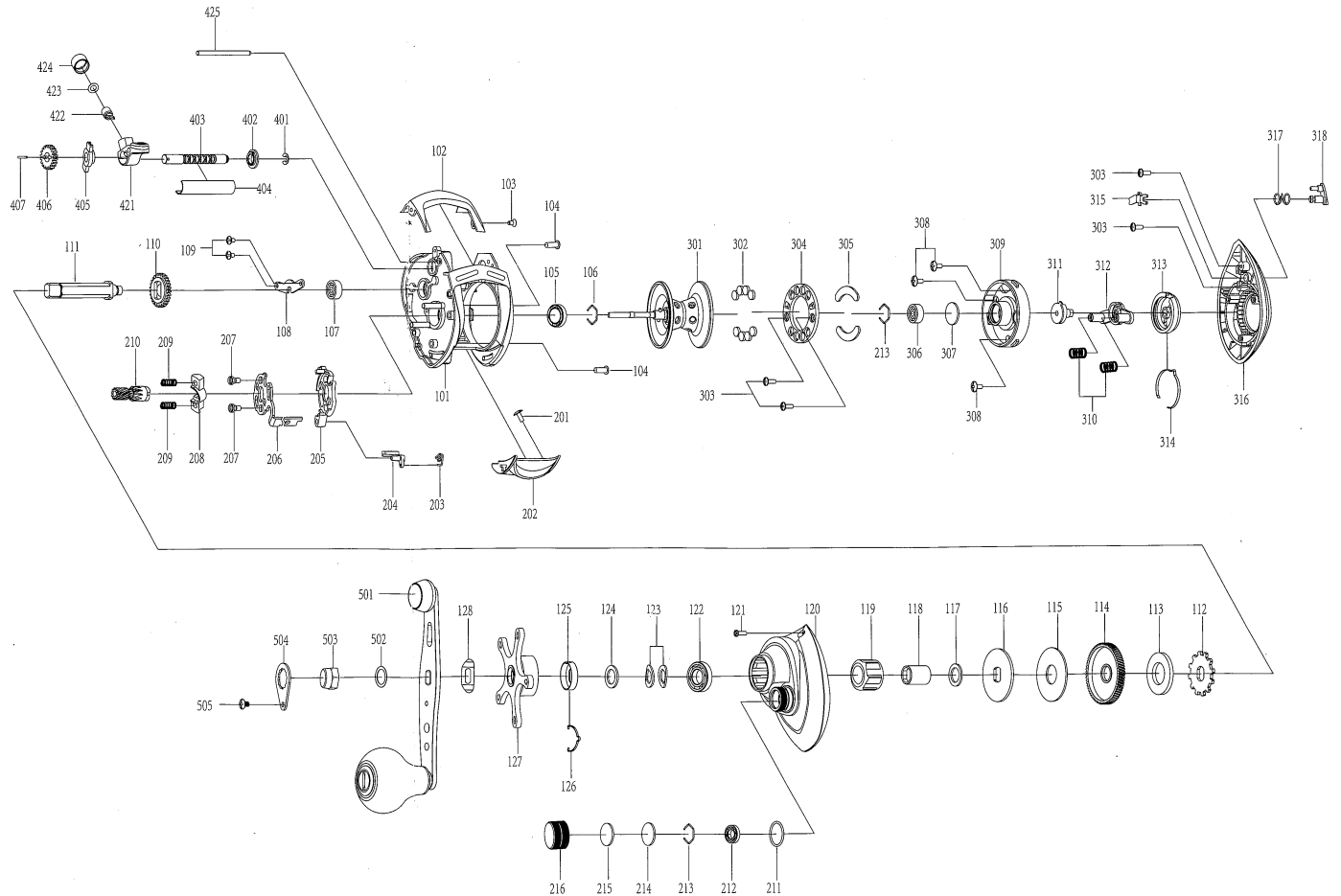


- 101. Frame
- 102. Front Cover
- 103. Screw
- 104. Screw
- 105. Ball Bearing
- 106. Stopper Spring
- 107. Bushing
- 108. Drive Shaft Retainer
- 109. Screw
- 110. Drive Shaft Gear
- 111. Drive Shaft
- 112. Ratchet
- 113. Washer
- 114. Drive Gear
- 115. Drag Washer-B
- 116. Drag Washer-A
- 117. Washer
- 118. Inner Tube Roller Clutch
- 119. Roller Clutch
- 120. Left Cover
- 121. Screw
- 122. Ball Bearing
- 123. Drag Spring Washer
- 124. Washer
- 125. Click Holder
- 126. Click Spring
- 127. Star Drag
- 128. Convex Washer
- 201. Clutch Lever Screw
- 202. Clutch Lever
- 203. Kick Lever Spring
- 204. Kick Lever
- 205. Clutch Cam
- 206. Clutch Link
- 207. Screw
- 208. Yoke
- 209. Yoke Spring
- 210. Pinion Gear
- 211. O-Ring
- 212. Ball Bearing
- 213. Spring
- 214. Spool Tension Spacer
- 215. Rubber Spacer
- 216. Cast Control Cap
- 301. Spool assembly
- 302. Magnet
- 303. Screw
- 304. Magnet Holder
- 305. Magnet Plate
- 306. Ball Bearing
- 307. Brake Spacer
- 308. Screw
- 309. Spool Cover
- 310. Break Cam Spring
- 311. Brake Cam
- 312. Break Cam Plate
- 313. Brake Adjusting Knob
- 314. Click Spring
- 315. Lock Plate
- 316. Right Cover
- 317. Push Button Spring
- 318. Push Button
- 401. E-Lock
- 402. Guide Bushing-A
- 403. Worm Shaft
- 404. Level Wind Guard
- 405. Guide Bushing-B
- 406. Worm Shaft Gear
- 407. Worm Shaft Pin
- 421. Line Guide
- 422. Line Guide Pawl
- 423. Washer
- 424. Pawl Cap
- 425. Stabilizer Bar
- 501. Handle Assembly
- 502. Washer
- 503. Handle Nut
- 504. Handle nut plate
- 505. Screw



Please safekeeping the parts list,
in order to use for servicing.