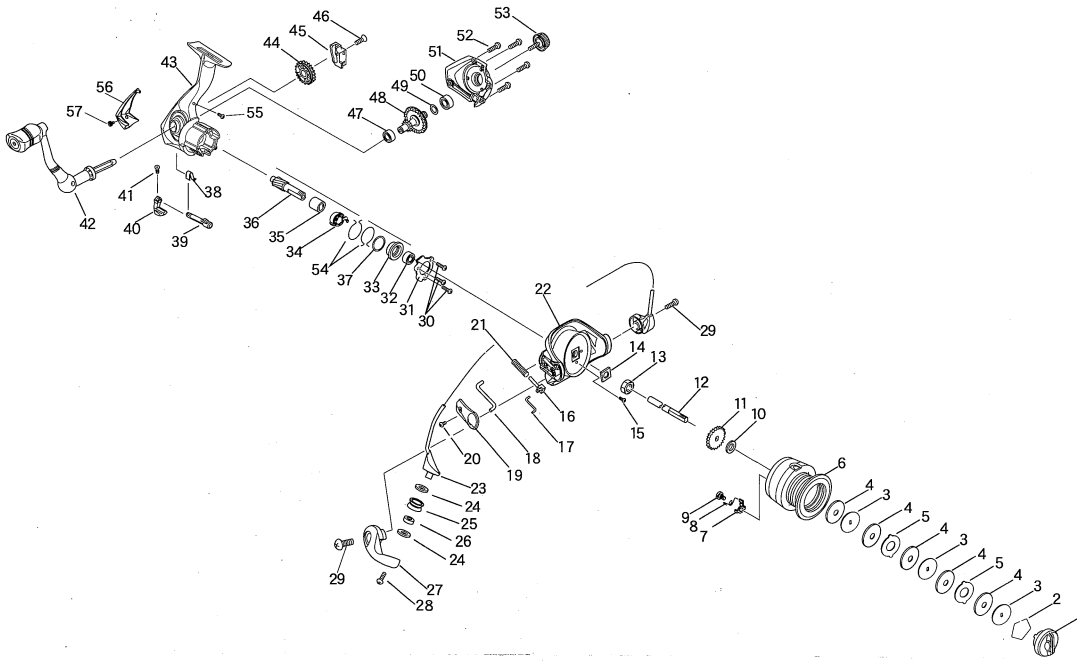


## ■ EXPLODED VIEW



## ■ PARTS LIST 5000/6000

No.	PART NAME	PART NO.		No.	PART NAME	PART NO.	
		5000	6000			5000	6000
1	Drag Knob Assembly	02322120	02322120	30	Screw	9466-01-26	9466-01-26
2	Stopper Spring	422001	422001	31	Bearing Support	302027	302027
3	Drag Washer	262008	262008	32	Ball Bearing	9446-01-17	9446-01-17
4	Drag Washer	262001	262001	33	Ball Bearing Collar	172011	172011
5	Drag Washer	262007	262007	34	One Way Clutch Assembly	024447	024447
6	Spool Assembly	02062349	02062350	35	Inner Ring	172012	172012
7	Click Claw	33327	33327	36	Pinion Gear	092003	092003
8	Click Claw Spring	67108	67108	37	Washer	9446-01-16	9446-01-16
9	Click Claw Screw	202001	202001	38	Anti-Reverse Spring	9406-01-26	9406-01-26
10	Click Washer	27453B	27453B	39	Anti-Reverse Cam	9446-01-11	9446-01-11
11	Click	132013	132013	40	Anti-Reverse Lever	152120	152120
12	Shaft	342169	342169	41	Screw	8405-LD-01	8405-LD-01
13	Nut	9446-01-14	9446-01-14	42	Handle Assembly	029446-05-01A	029446-05-01A
14	Nut Washer	9446-01-15	9446-01-15	43	Main Body Assembly	02032137	02032137
15	Screw	9446-01-28	9446-01-28	44	Bull Gear	9446-01-08	9446-01-08
16	Slider	68513	68513	45	Oscillator	9446-01-09	9446-01-09
17	Link	9446-02-08	9446-02-08	46	Screw	9446-01-22	9446-01-22
18	Kick Lever	9446-02-07	9446-02-07	47	Ball Bearing	9446-01-18	9446-01-18
19	Cover A	412155	412155	48	Main Gear	9446-01-07	9446-01-07
20	Screw	9466-01-26	9466-01-26	49	Washer	27290A	27290A
21	Dead Point Spring	9446-02-11	9446-02-11	50	Ball Bearing	9446-01-19	9446-01-19
22	Rotor	052131	052131	51	Side Plate Assembly	02042135	02042135
23	Bail Arm Assembly	02292003	02292003	52	Screw	ST2.6-12	ST2.6-12
24	Washer	27704	27704	53	Handle Cap	192106	192106
25	Line Roller	9446-02-10	9446-02-10	54	One Way Clutch Spring	9446-01-21	9446-01-21
26	Ball Bearing	38248	38248	55	Screw	20546	20546
27	Bail Arm Lever	152121	152121	56	Back Cover	412191	412191
28	Screw	21165	21165	57	Screw	5406-01-05	5406-01-05
29	Screw	20663	20663				

A471-4447