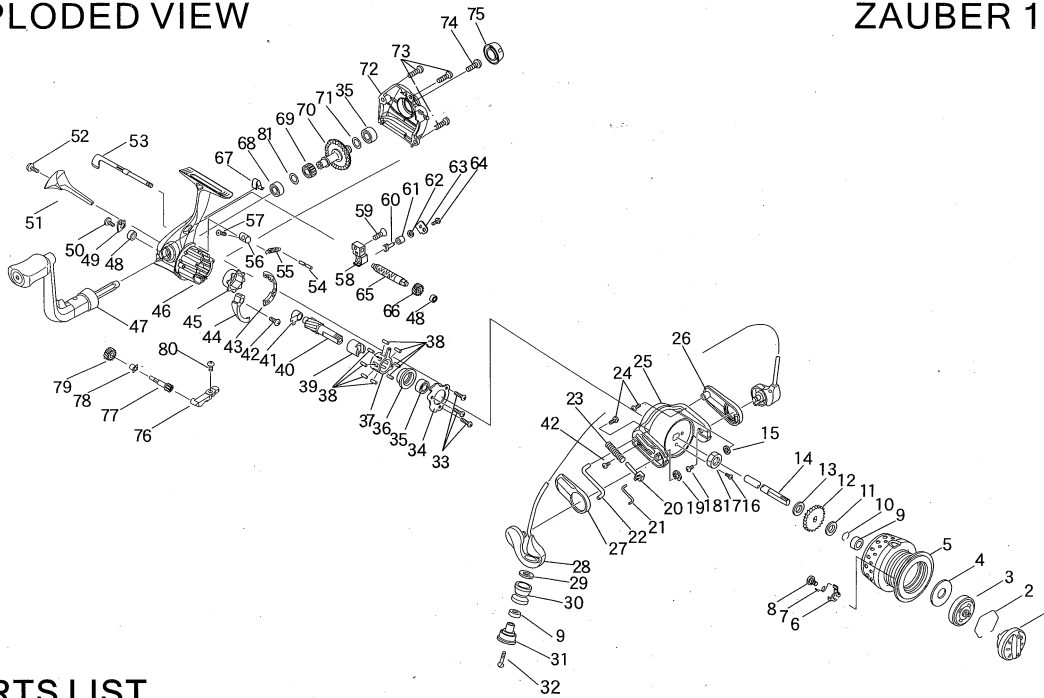


■ EXPLODED VIEW

ZAUBER 1000/2000



■ PARTS LIST

NO.	PARTS NO.	PARTS NAME	NO.	PARTS NO.	PARTS NAME	NO.	PARTS NO.	PARTS NAME
1	0232198A	DRAG KNOB ASSY.	28	0229358A	BAIL ARM ASSY.	56	14353	ANTI-REVERSE CAM
2	42081	STOPPER SPRING	29	27704	WASHER	57	20632	SCREW
3	0268514	CLICK PLATE ASSY.	30	25096A	ROLLER	58	11159	OSCILLATOR
4	26439	DRAG WASHER	31	68518	ROLLER HOLDER	59	20383A	SCREW
5	0206584	SPOOL ASSY.(1000)	32	21163	SCREW	60	33318	CLAW
	0206584A	SPOOL ASSY.(2000)	33	20610	SCREW	61	17407	COLLAR
6	33327	CLICK CLAW	34	30162	BEARING SUPPORT	62	27715	WASHER
7	67108	CLICK CLAW SPRING	35	38049	BALL BEARING	63	30166	PRESSURE PLATE
8	21157	CLICK CLAW SCREW	36	17435	BALL BEARING COLLAR	64	20648	SCREW
9	38248	BALL BEARING	37	68517	HOLDER	65	14355	TRAVERSE CAM
10	42077	STOPPER RING	38	25089	ROLLER	66	10479	NO.4 GEAR
11	27453B	CLICK WASHER	39	17413	INNER RING	67	67111	ANTI-REVERSE SPRING
12	13119	CLICK	40	09332	PINION GEAR	68	38059	BALL BEARING
13	27694	SPOOL WASHER	41	16358	BUSH	69	10492	NO.1 GEAR
14	34035	SHAFT	42	20637	SCREW	70	08281	MAIN GEAR
15	27688	WASHER	43	49055	CONTROL PLATE	71	27290A	WASHER
16	20635	SCREW	44	68523	KICK CAM	72	04505	SIDE PLATE
17	18081	HEXAGON NUT	45	68449	OUTER RING	73	20559	SCREW
18	20634	SCREW	46	0203360A	MAIN BODY ASSY.	74	21146	HANDLE SCREW
19	42021	STOPPER RING	47	0207380B	HANDLE ASSY.	75	0219488A	HANDLE CAP ASSY.
20	68513	SLIDER	48	38245	BALL BEARING	76	68515	SUPPORT
21	68519	LINK	49	30165	SUPPORT	77	10477	NO.2 GEAR
22	15682	KICK LEVER	50	20638	SCREW	78	16360	BUSH
23	67077	DEAD POINT SPRING	51	41533	PROTECTOR	79	10478	NO.3 GEAR
24	20400	SCREW	52	20634A	SCREW	80	20639	SCREW
25	05262B	ROTOR	53	15681B	ANTI-REVERSE LEVER	81	27365	WASHER
26	41530	COVER B	54	23349	SPRING PIN			
27	41529	COVER A	55	67107	ONE WAY CLUTCH SPRING			

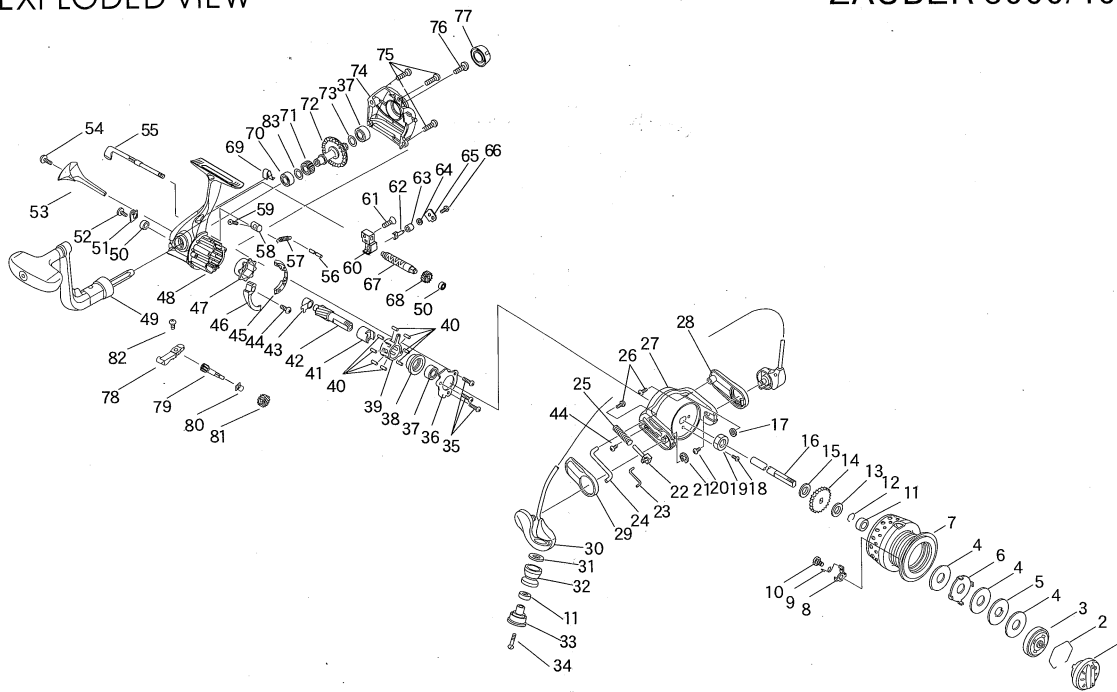
■ SPECIFICATIONS

Model Name	Gear Ratio	Drag Power (Max.)	Weight	Ball Bearing	Line Capacity		
ZAUBER 1000	5.1:1	2.5kg	280g	8	0.205mm-130m	0.235mm-100m	0.285mm-65m
ZAUBER 2000	5.1:1	2.5kg	280g	8	0.235mm-150m	0.285mm-100m	0.330mm-70m

DESIGNED AND ENGINEERED IN JAPAN

■ EXPLODED VIEW

ZAUBER 3000/4000



■ PARTS LIST

NO.	PARTS NO.	PARTS NAME	NO.	PARTS NO.	PARTS NAME	NO.	PARTS NO.	PARTS NAME
1	0232198A	DRAG KNOB ASSY.	28	41536	COVER B(3000)	57	67107	ONE WAY CLUTCH SPRING
2	42081	STOPPER SPRING		41541	COVER B(4000)	58	14353	ANTI-REVERSE CAM
3	0268514A	CLICK PLATE ASSY.	29	41535	COVER A(3000)	59	20632	SCREW
4	26440	DRAG WASHER		41540	COVER A(4000)	60	11160	OSCILLATOR
5	26437	DRAG WASHER	30	0229361A	BAIL ARM ASSY.(3000)	61	20383A	SCREW
6	26438	DRAG WASHER		0229365A	BAIL ARM ASSY.(4000)	62	33318	CLAW
7	0206597	SPOOL ASSY.(3000)	31	27704	WASHER	63	17407	COLLAR
	0206598	SPOOL ASSY.(4000)	32	25096A	ROLLER	64	27715	WASHER
8	33327	CLICK CLAW	33	68518	ROLLER HOLDER	65	30167	PRESSURE PLATE
9	67108	CLICK CLAW SPRING	34	21163	SCREW	66	20648	SCREW
10	21157	CLICK CLAW SCREW	35	20610	SCREW	67	14354	TRAVERSE CAM(3000)
11	38248	BALL BEARING	36	30162	BEARING SUPPORT		14361	TRAVERSE CAM(4000)
12	42077	STOPPER RING	37	38049	BALL BEARING	68	10479	NO.4 GEAR
13	27453B	CLICK WASHER	38	17435	BALL BEARING COLLAR	69	67117	ANTI-REVERSE SPRING
14	13119	CLICK	39	68517	HOLDER	70	38059	BALL BEARING
15	27694	SPOOL WASHER	40	25089	ROLLER	71	10492	NO.1 GEAR
16	34036	SHAFT(3000)	41	17413	INNER RING	72	08283	MAIN GEAR
	34047	SHAFT(4000)	42	09333	PINION GEAR	73	27290A	WASHER
17	27723	WASHER(3000)	43	16359	BUSH	74	04506	SIDE PLATE
	27688	WASHER(4000)	44	20637	SCREW	75	20559	SCREW
18	20635	SCREW	45	49056	CONTROL PLATE	76	21146	HANDLE SCREW
19	18081	HEXAGON NUT	46	68524	KICK CAM	77	0219488A	HANDLE CAP ASSY.
20	20634	SCREW	47	68449	OUTER RING	78	68515	SUPPORT
21	42021	STOPPER RING	48	0203361A	MAIN BODY ASSY.	79	10484	NO.2 GEAR
22	68513	SLIDER	49	0207380E	HANDLE ASSY.	80	16360	BUSH
23	68519	LINK	50	38245	BALL BEARING	81	10478	NO.3 GEAR
24	15687	KICK LEVER(3000)	51	30165	SUPPORT	82	20639	SCREW
	15692	KICK LEVER(4000)	52	20638	SCREW	83	27365	WASHER
25	67145	DEAD POINT SPRING	53	41534	PROTECTOR			
26	20400	SCREW	54	20634A	SCREW			
27	05263B	ROTOR(3000)	55	15684B	ANTI-REVERSE LEVER			
	05264B	ROTOR(4000)	56	23349	SPRING PIN			

■ SPECIFICATIONS

Model Name	Gear Ratio	Drag Power (Max.)	Weight	Ball Bearing	Line Capacity		
ZAUBER 3000	5.0:1	5.0kg	305g	8	0.235mm-200m	0.285mm-150m	0.330mm-100m
ZAUBER 4000	5.0:1	5.0kg	315g	8	0.285mm-200m	0.330mm-150m	0.370mm-110m

DESIGNED AND ENGINEERED IN JAPAN